

Singapore's Efforts in Combating COVID-19

caa 18 May 2020



What Singapore Stands For

**Our priorities are to protect lives and livelihoods,
and to deal with the COVID-19 pandemic effectively and openly.**

- As a responsible member of the international community, we uphold the values of being open and connected to the world to support the free flow of trade, supplies and investments.
- We take care of everyone residing in Singapore, regardless of nationality. This includes the health, livelihoods and welfare of our migrant workers, who have helped to build this country.
- Growing our economy and creating good jobs remain Singapore's priorities for the way forward. We have the determination and resources to overcome this crisis, and to transform our businesses and workforce to emerge stronger.

Content

- 1 Singapore is a responsible member of the international community
- 2 Strategies to manage the COVID-19 outbreak in Singapore
- 3 Singapore is well-positioned to weather the COVID-19 crisis
- 4 Singapore plans to progressively reopen the economy in a safe and sustainable manner
- 5 Conclusion

Singapore is a Responsible Member of the International Community

Singapore stands ready to work with international partners to limit the global spread of the disease.

- We are committed to minimising disruptions to the global supply chains.
- We have kept our supply chains open during the COVID-19 pandemic and allowed essential supplies to flow to other countries from and through Singapore (e.g. medical and food supplies).
- Key companies in our precision manufacturing, global manufacturing, biomedical, petrochemical sectors and their accompanying supply chains continued to function.



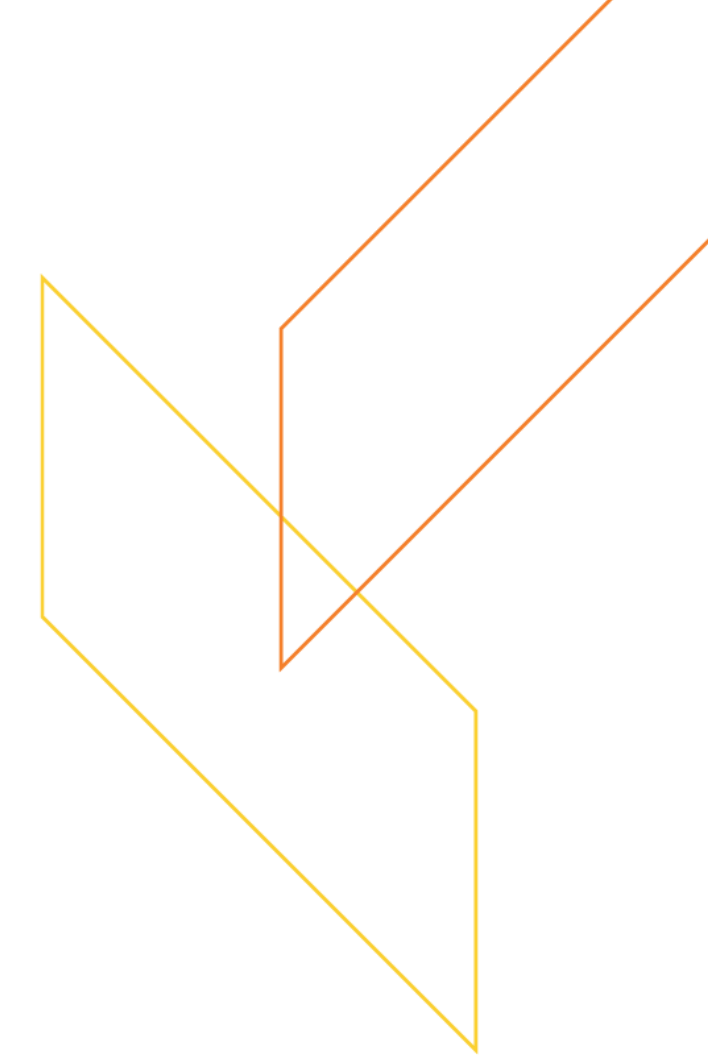
Singapore will do its part to deliver a coordinated global response to the pandemic.

- A global pandemic requires a global response. All countries need to work together.
- We share regular updates with foreign missions and international organisations in Singapore.
- **Singapore will remain a trusted hub for investments and businesses. We maintain a free and fair trading environment for all businesses to fulfil their contractual obligations and responsibilities.** This was the case during the oil crisis in the 1970s and continues to be true today.





Strategies to Manage the COVID-19 Outbreak in Singapore





Numbers at a glance

We have two sets of infections in Singapore.

1) In the community:

No. of new cases in the community (11-17 May): **Average 3 per day**

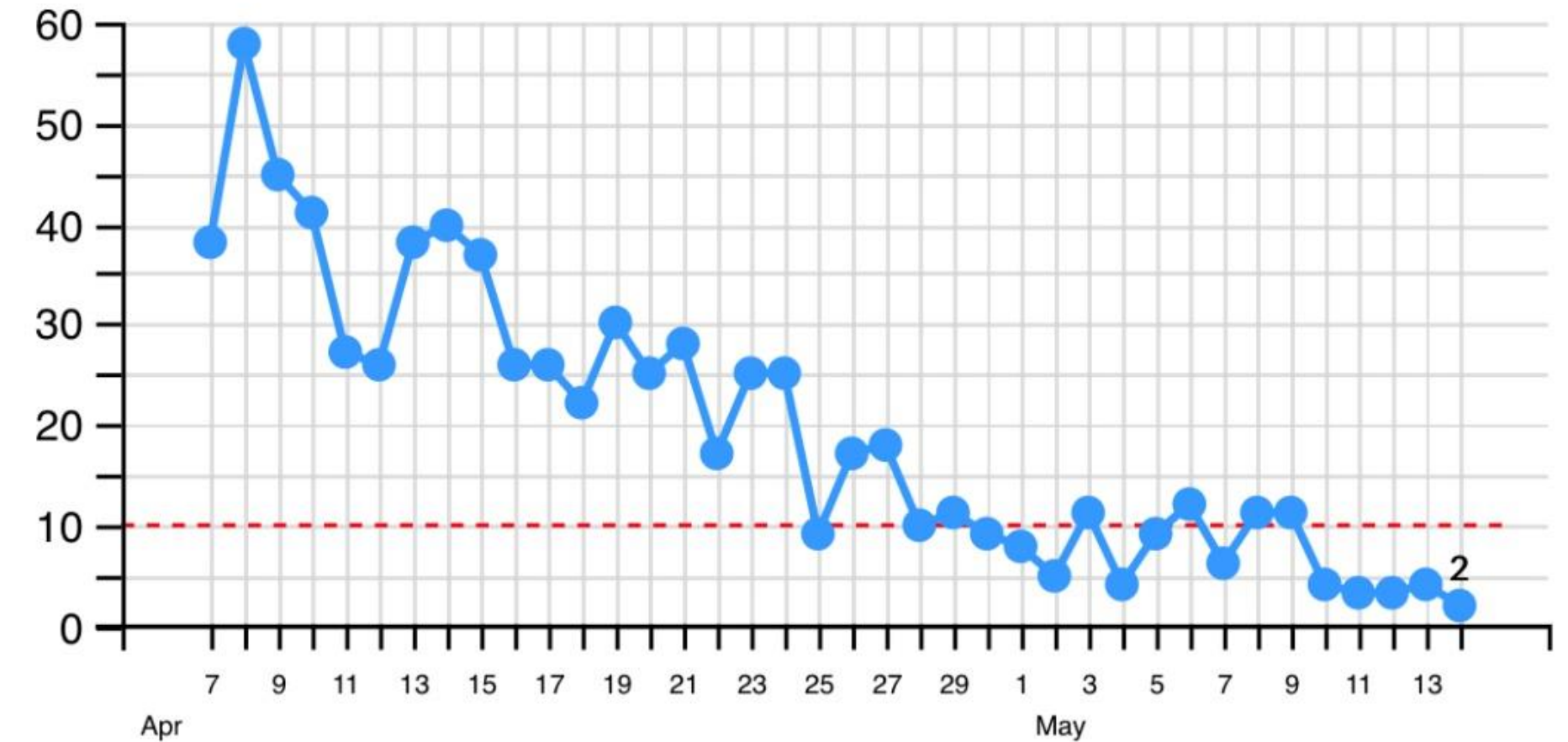
No. of unlinked cases in the community (11-17 May): **Average 2 per day**

2) In the migrant worker dormitories:

- The daily infection numbers from workers in the dormitories are still high, and will remain so for some time, because we are proactively and preemptively testing all 323,000 workers.
- As of 17 May, about 82,000 workers have been tested. About 3,000 tests are now being done each day, and we will increase this number in the coming weeks.
- Those who have tested positive will be given the same medical treatment as Singaporeans, and isolated from other workers during their recovery.
- Amongst the migrant workers who are infected, a large majority are clinically well with mild or no symptoms.

COMMUNITY CASES

Community cases include Singapore residents and pass holders but exclude work permit holders and dorm residents



Transparent and Evidence-based Approach

- The total number of cases in Singapore requiring intensive care has consistently remained below 25 since the start of the pandemic.
- There have been very few deaths among Singapore's infected cases and Singapore has one of the lowest death rates in the world.

This Week in Asia / Health & Environment


Coronavirus: why so few deaths among Singapore's 14,000 Covid-19 infections?

- The tiny Lion City now has more infections than any other Southeast Asian nation, yet its death rate is just a fraction of that of its neighbours
- Experts say this is because migrant workers, who account for most cases, tend to be young, while older, more vulnerable residents have heeded advice

Dewey Sim in Singapore and Kok Xinghui
Published: 7:00pm, 27 Apr, 2020

Why you can trust SCMP

6.4k



A woman has her hands sanitised while buying groceries amid the coronavirus outbreak in Singapore. Photo: Reuters

With more than 14,000 coronavirus infections, Singapore now has more

Covid-19 death rates

SINGAPORE COMPARED WITH THE REST OF THE WORLD

Country	Fatality rate (Death rate from infection) (%)	Deaths per 100,000 people in the population
Singapore	0.1	0.25
Malaysia	1.7	0.31
South Korea	2.3	0.47
Japan	2.8	0.29
China	5.5	0.33
United States	5.7	16.77
Indonesia	8.4	0.28
Spain	10.2	49.63
United Kingdom	13.5	31.27
Italy	13.5	44.09
Belgium	15.4	62.11

SINGAPORE'S DEATH RATE BY DEMOGRAPHIC**

Demographic	Number of cases	Fatality rate (%)
Total number of cases	14,423	0.1
Cases not from dormitories (Imported cases, cases in the community, and cases among work-permit holders not living in dormitories)	2,240	0.63
Cases from dormitories	12,183	0

SINGAPORE'S DEATH RATE AMONG SENIORS

Age group	Number of cases***	Number of deaths*	Fatality rate (%)
60-69	211	3	1.4
70-79	72	3	4.2
80 and above	39	8	20.5

NOTE: *Information is as of April 28. ** Information is as of April 27. *** Information is as of April 19. Since April 20, the Ministry of Health has stopped releasing individual case data. As such, the number of cases per age group cannot be computed beyond April 19.

SOURCES: JOHN HOPKINS UNIVERSITY CORONAVIRUS RESOURCE CENTRE, MOH SITUATION REPORT, ST CORONAVIRUS DATABASE STRAITS TIMES GRAPHICS

Singapore is amongst the countries that perform the highest number of tests per million population.

Countries that perform the highest number of tests per million population		
1	Spain	64,977
2	Portugal	64,938
3	Belgium	61,277
4	Qatar	57,801
5	Singapore	51,600
6	Russia	50,383
7	Italy	50,294
8	Switzerland	40,487
9	Belarus	39,692
10	UK	39,542
11	Germany	37,584
12	USA	37,188
13	Canada	35,100
14	France	21,218
15	Sweden	20,799
16	Peru	20,085

caa 18 May 2020



Number of Swabs Tested (as of 18 May 2020)

Total Swabs Tested

294,414

Total Unique Persons Swabbed

191,260



Ask Jamie

Total Swabs Per 1,000,000 Total Population

~51,600

Total Unique Persons Swabbed Per 1,000,000 Total Population

~33,500

Strategy to Manage COVID-19 Outbreak in Migrant Worker Dormitories – Health and Safety

- Medical posts have been set up in all purpose-built dormitories, while mobile medical teams support factory-converted dormitories, construction temporary quarters and private residential premises.
- **We test workers extensively and pre-emptively, even those without symptoms, hence the high number of cases reported.**
- Our migrant workers receive the same standard of care as Singaporeans if infected.



Coronavirus: Bangladeshi worker, whose wife gave birth to baby boy, out of ICU after more than 2 months



The patient's baby was born on March 30, 2020, while he was still in intensive care. PHOTO: ITSRAININGRAINCOATS/FACEBOOK

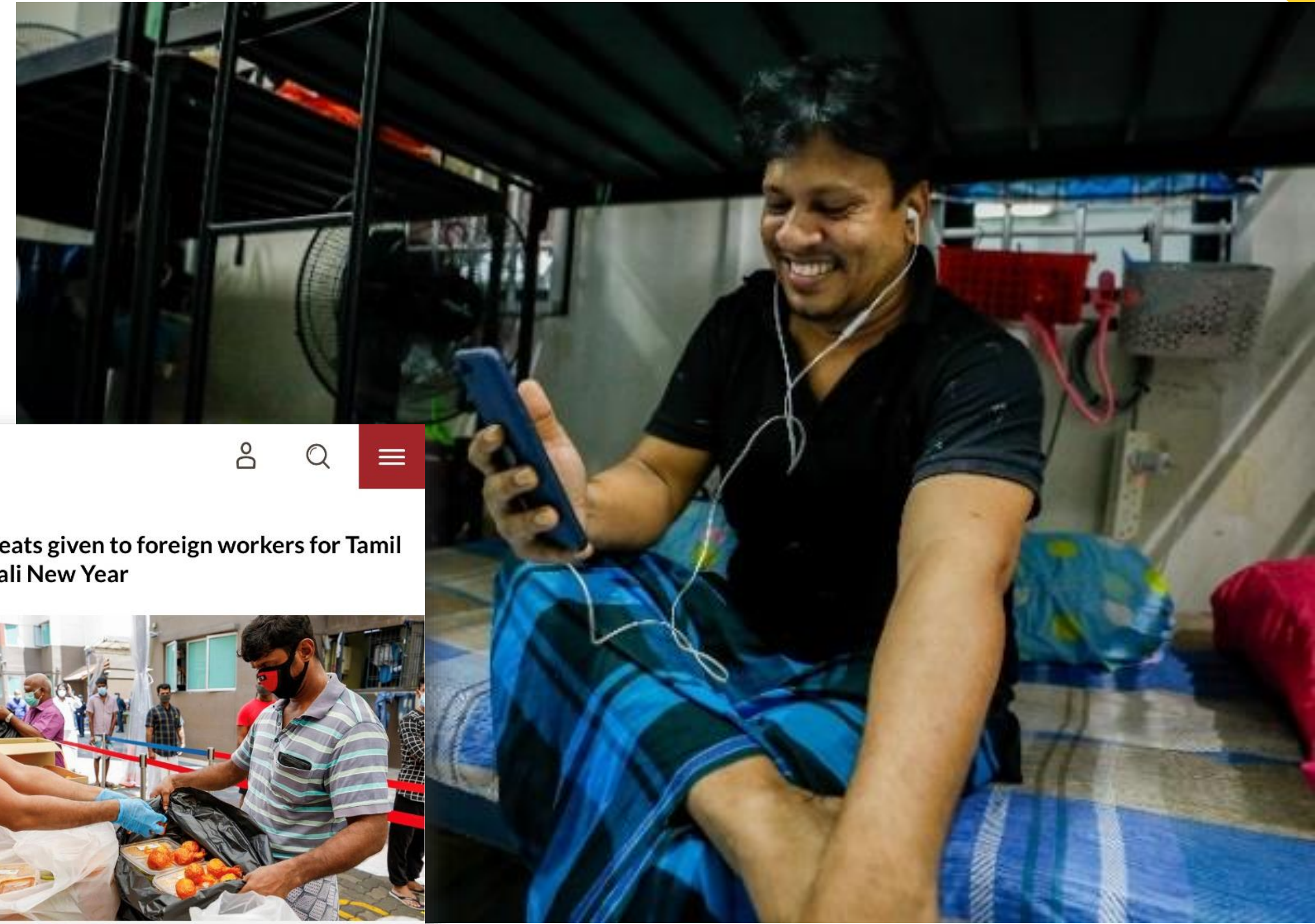
Strategy to Manage COVID-19 Outbreak in Migrant Worker Dormitories – Health and Safety

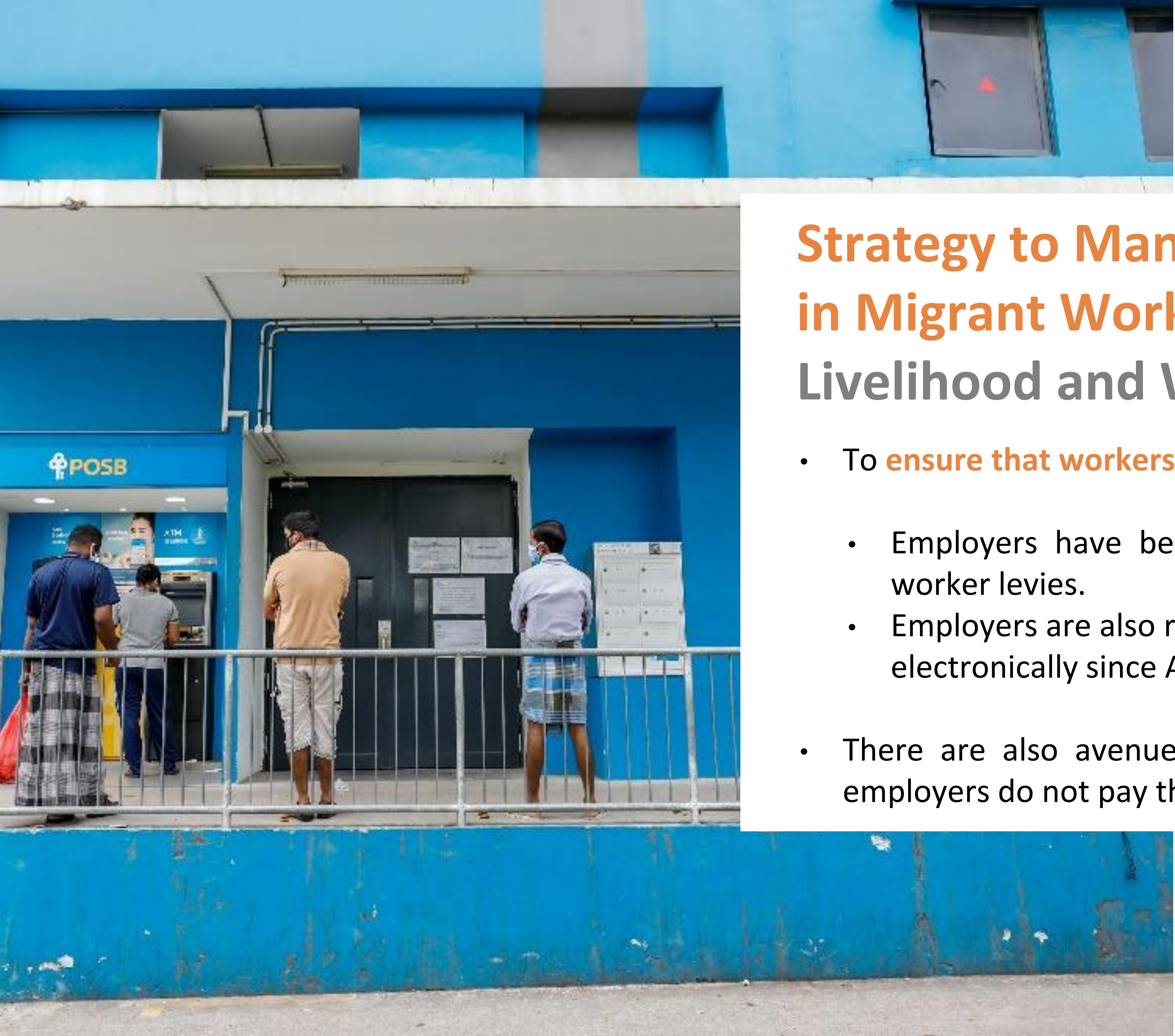
- Beyond these, we are now preparing for the next phase – **getting the recovery right**.
- This involves building up community recovery facilities (CRFs) and housing recovered workers in suitable accommodation to minimise the risks of recurrent transmissions.
- We are also working out ways to allow recovered and uninfected workers to go back to work safely.



Strategy to Manage COVID-19 Outbreak in Migrant Worker Dormitories – Livelihood and Wellbeing

- To **protect their welfare** – Forward Assurance and Support Teams (FAST) are deployed to all 43 purpose-built dormitories to implement safe distancing and take care of the workers' well-being. Mobile FASTs are also deployed to support factory-converted dormitories.
- Beyond physical needs (food, accommodation, pay), we also care for the workers' well-being. They receive free internet access, hand sanitisers, surgical masks, counselling etc.
- The wider community has also stepped forward to provide support for migrant workers (e.g. 24-hr Care hotline, MaskForce).





Strategy to Manage COVID-19 Outbreak in Migrant Worker Dormitories – Livelihood and Wellbeing

- To **ensure that workers continue to be paid**:
 - Employers have been given rebates and waivers of foreign worker levies.
 - Employers are also required to pay the salaries of their workers electronically since April 2020.
- There are also avenues for workers to seek assistance if their employers do not pay them.

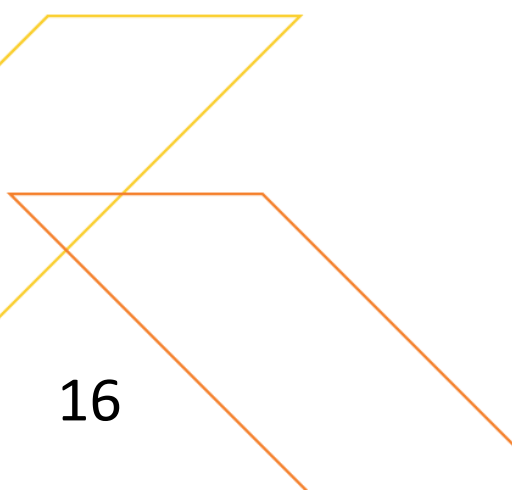
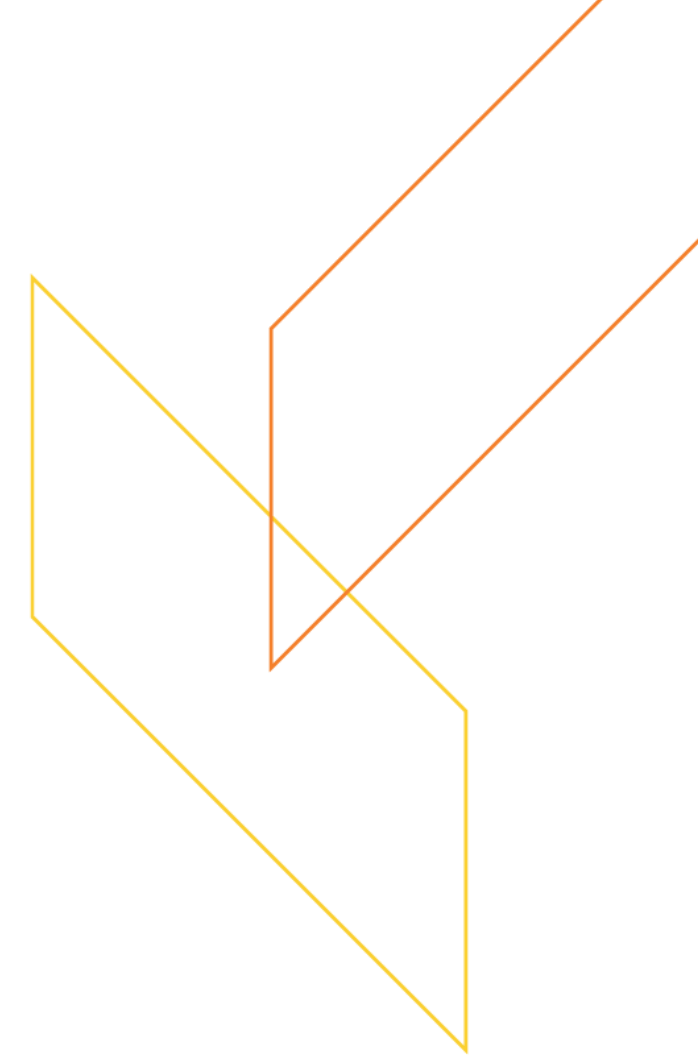
Strategy to Manage COVID-19 Outbreak in Migrant Worker Dormitories – Livelihood and Wellbeing

- An Inter-Agency Task Force comprising more than 750 government officials has been set up to minimise further infections and care for migrant workers' welfare.
- **In the longer-term, we remain committed to improving housing standards for our migrant workers.**
- Our migrant workers have come here to work hard for a living and provide for their families back home. Singapore appreciates their contribution. **We will take care of their health, livelihood and welfare, and help them go home safe and sound.**





Singapore is Well-Positioned to Weather the COVID-19 Crisis



Singapore is Well-Positioned to Weather the COVID-19 Crisis

- COVID-19 is an unprecedented crisis on many fronts but we are well-positioned to weather the storm.
- We have set aside more than S\$60 billion to support business, workers and households during this difficult time, and we will do more if necessary.
- The strong tripartite relationship in Singapore ensures we are able to deliver a united and coordinated response to the challenges our workers and business face.
- Singapore has sufficient supplies of food and other essential items as a result of our robust and multi-pronged strategy.



Singapore is Well-Positioned to Weather the COVID-19 Crisis



- Singapore has plans to increase healthcare capacity significantly in the next two months.
- We have activated support from nation-wide network of primary care clinics for community surveillance.
- Singapore has stepped up laboratory testing capacity supported by advanced research capabilities.
- We intend to ramp up our daily testing capacity to 40,000 by the later part of 2020.



Singapore Plans to Progressively Reopen the Economy in a Safe and Sustainable Manner

Going Forward, Singapore Plans to Progressively Reopen the Economy in a Safe and Sustainable Manner



- Our aim is to ensure that we can reopen our economy from 2 June 2020 in a sustainable manner so that we can prevent potential flare-ups and having to put in place new circuit breaker measures.
- In order to do so in a safe manner, we need to maintain vigilance to swiftly detect and effectively isolate individuals, when needed. Reopening will be done in phases, starting with businesses that operate in settings with lower transmission risks, or do not result in large group or close contact.

Going Forward, Singapore Plans to Progressively Reopen the Economy in a Safe and Sustainable Manner



- **We will actively work with companies to put in place safe management measures ahead of their reopening.**
 - **Safe working environment** (e.g. stepping up cleanliness and hygiene standards, safe distancing, ensure maximum telecommuting)
 - **Safe transport arrangements** (e.g. implement safe distancing and staggered working hours)
 - **Safe living environment**
 - **Safe social interactions** (e.g. workers are not to mix and must maintain social cohorting discipline)

Singapore Plans to Progressively Reopen the Economy in a Safe and Sustainable Manner



- **Companies should take this time to do the necessary preparations and engage their employees.** We will work closely with our businesses, TACs and foreign chambers and walk this journey with them.



- The timeline for reopening is ultimately dependent on the health situation. We are taking a conditions and outcomes-based approach.



- **It is our joint responsibility to safeguard the health of our workers and business continuity.** Should any of our workers be infected, the entire company operations will be impacted.

- **Beyond helping businesses and workers tide through the current difficulties, we will need to help many businesses to transit to new models to survive for the longer term.** It will not be possible to save all jobs but we must work hard to help our affected workers acquire new skills and transit to new jobs.

Singapore Plans to Progressively Reopen the Economy in a Safe and Sustainable Manner



- **We will also work with our foreign business chambers and foreign counterparts to safely resume essential business travels.** This will require us to put in place shared protocols for health checks, travel monitoring, and information dissemination to affected travellers.

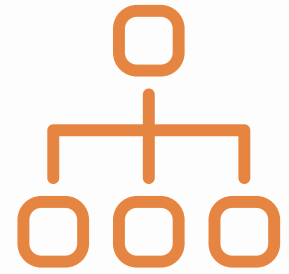


- We will continue to adopt a transparent approach to the sharing of information to engender trust and confidence in our system.



- Singapore actively work with like-minded countries to maintain connectivity for air, land and sea links to keep supply chains for essential goods, such as medicine and food, unimpeded.

Conclusion



- The post-COVID-19 environment will not return to the previous norm but Singapore's foundations and fundamentals remain sound.
- While we make adjustments and think of the post-COVID-19 situation, we are confident that we have the means and the capabilities to see through the challenges posed by COVID-19.
- Partners can remain assured that we will fulfil our obligations to the international community and work together with them to progressively rebuild and strengthen our economies for the benefit of our businesses and people.

